

Steps for updating the activation key in MAESTRO System Software 4.0.2:

When updating the activation key for MAESTRO 4.0.2 the database path will unfortunately default. This means that if the MAESTRO System Software 4 was previously connected to a MAESTRO SQLite Database other than the default database or to a SQL Server Database, the MAESTRO database will have to be reassigned using the 'MAESTRO Database Selection Tool'.

Please check your current database path before updating the activation key.

If the default database path has been used please proceed with step 2 to change the activation key.

Please use the following workflow to change the activation key and reassign the database path if the MAESTRO database was assigned to a non-default path (e.g. network drive) or an SQL server:

1. Start the Database Selection Tool by clicking on Start/all programs/MED-EL/Database Selection Tool. The current database path or connection to the SQL server is shown in this window. After closing this window the database path/connection will be remembered by the Database Selection Tool.
2. Change the activation key:
To change the activation key, administrator rights are required.

There are two ways to change the activation key:

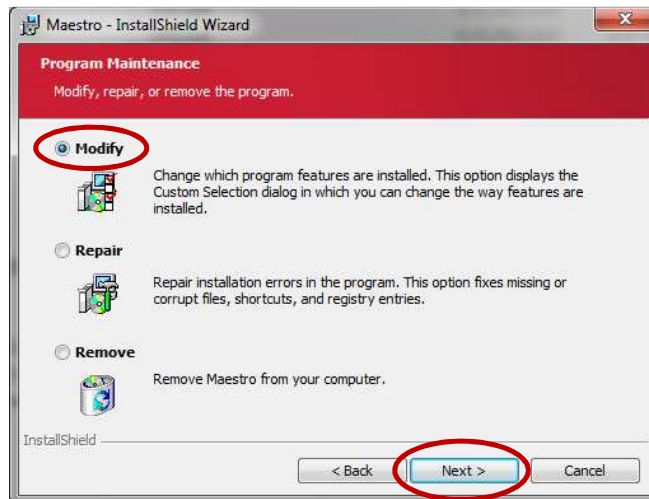
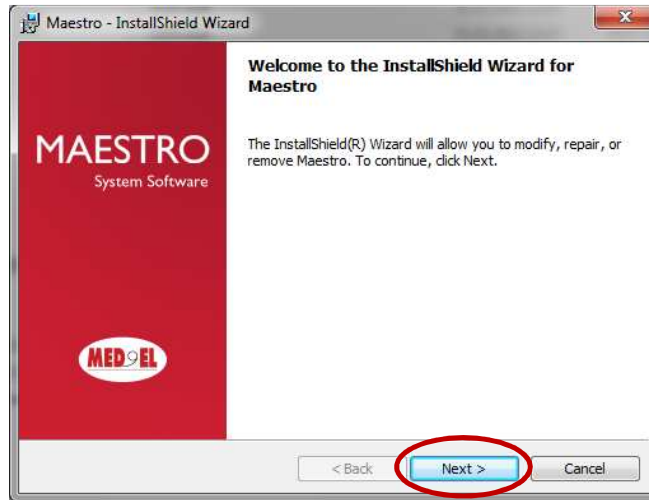
A. Change with CD-ROM:

Select setup.exe from the MAESTRO System Software 4.0 Service Release 2 CD: Drive:\Maestro → setup.exe

B. Change without CD-ROM:

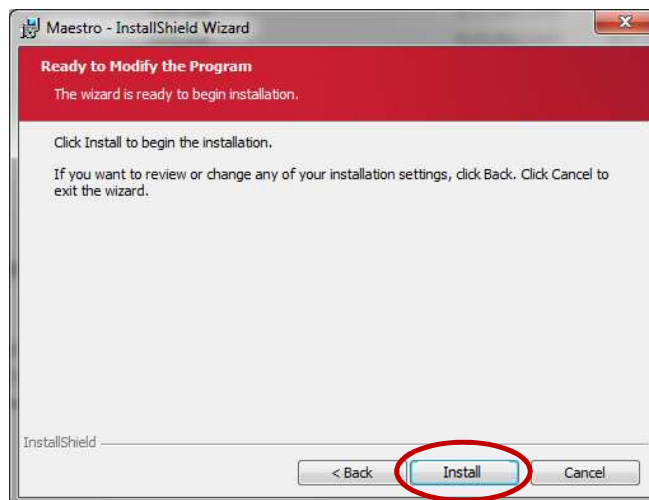
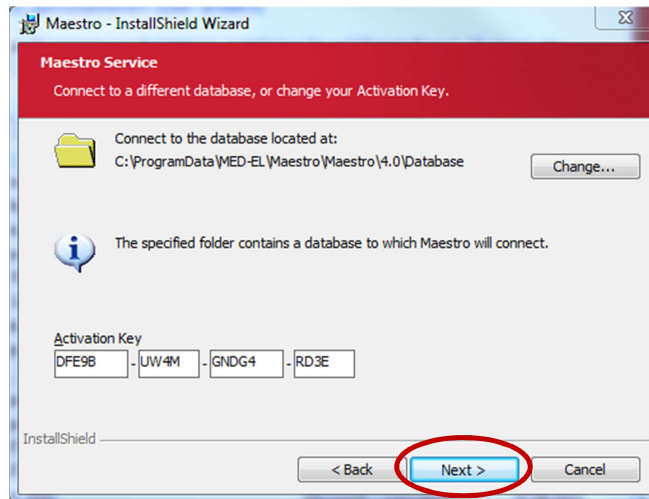
Windows 7: Go to "Start" – "Control Panel" – "Programs and Features", select MAESTRO and click on "Change".

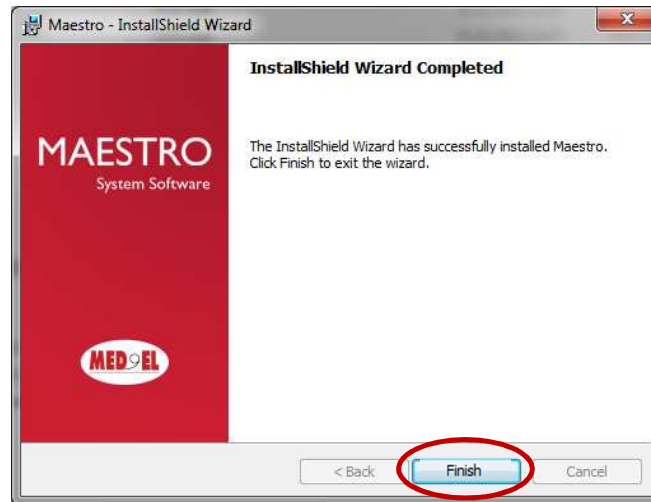
Windows XP: Go to "Start" – "Settings" – "Control Panel" – "Add or Remove Programs", select MAESTRO and click on "Change".



3. Type in the new activation key (valid until 03 June 2013):

DFE9B-UW4M-GNDG4-RD3E





4. Start the Database Selection Tool again, select your specific database path/SQL connection from the list (as shown below) and close the window to finish.

